

First Medium Range Lantern with Integrated AIS Monitoring

6-13NM Lantern with
Integrated AIS Monitoring



SL-155 Series

Marine Lantern with Integrated AIS Monitoring

Product Features

- Our first medium range lantern with integrated AIS Monitoring
- Compact single tier lantern up to 13NM
- One installation - no additional mounting required for separate AIS unit
- Minimal maintenance
- Extremely low power consumption
- Space saving solution
- Smallest medium range lantern on the market

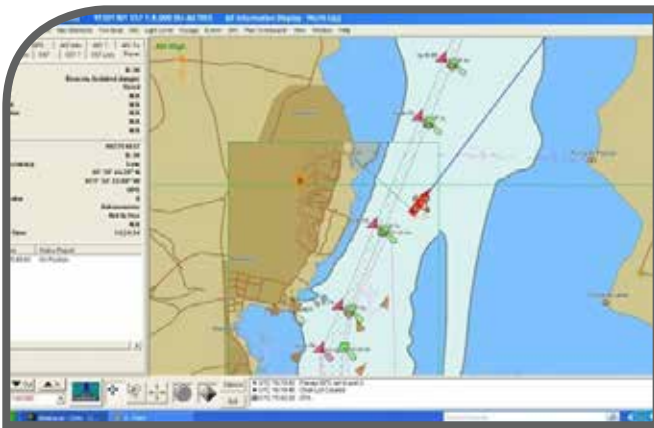
First Medium Range Lantern with Integrated AIS Monitoring



Our first medium range lantern with integrated AIS Monitoring.

SL-155 Marine Lantern

- Over 9,000cd luminous intensity white
- Compact single tier lantern up to 13NM visible range
- PC or IR Programmer for set up, diagnostics and testing
- Type 1 or Type 3 Integrated AIS
- Internal or external photocell options
- User configurable day/night lux levels
- Wide operating voltage range 10 – 30VDC
- Suitable for solar, mains and battery applications
- Optional GSM Monitoring & Control



AIS Monitoring

- Type 1 & Type 3 models available
- Supports Message 6 and 21 - crucial information such as AtoN operational status and positioning
- Accurate and real-time information
- Potential RACON replacement
- Includes VHF Antenna

Note: 2.5 degree model available with external antenna only

Save Time and Money

- ALL IN ONE! No need for a separate AIS unit (mounted and joined)
- No additional cables to existing lantern
- Small form factor, lighter
- One easy installation - huge money savings!
- Low power consumption
- Single tier lantern up to 13NM visible range
- Suitable for a range of port and harbour applications

